

# Stellaris Elite™

Vision Enhancement System



BUILT FOR THE NEXT GENERATION.  
BUT READY FOR THIS ONE.

**BAUSCH + LOMB**

# #WelcomeToThe



# theNextChapter

With a combination of leading-edge technologies, **the all-new Stellaris Elite™** is designed to deliver optimised control and efficiency to a wide range of cataract and retina procedures.

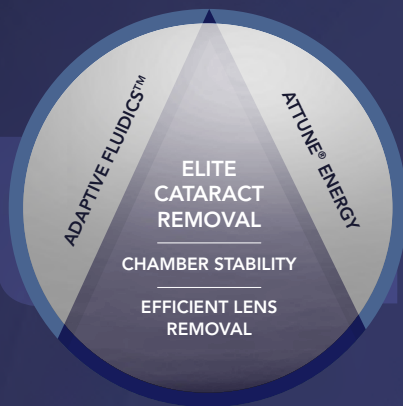
**And only Stellaris Elite™ offers the next-generation vitreous liquefaction and aspiration with the Vitesse™ hypersonic vitrectomy system.**

Ready to grow and evolve as technology advances, **Stellaris Elite™ has the built-in capability** for multi-use environments, now and as future practice needs arise.

- Maximizes immediate and long-term return of interest, with cataract and retina capabilities in a single platform
- Platform technology built to seamlessly handle future updates and enhancements

# REIMAGINE PRECISE CONTROL

**Adaptive Fluidics™** integrates automated aspiration control with Dynamic Infusion Compensation to create the new standard for **stabilizing** intraocular pressure, creating a responsive and controlled surgical environment.

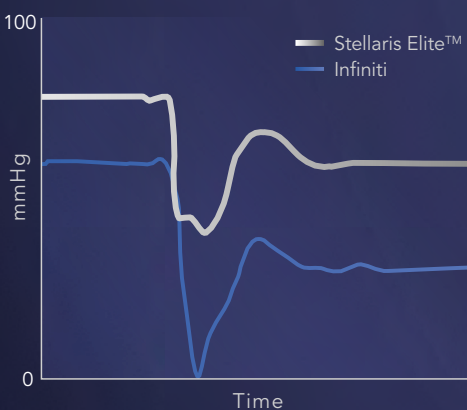


## CHAMBER STABILITY

Dynamic Infusion Compensation technology compensates for changes in fluid flow, to improve control and to maintain a stable chamber. After the surgeon sets a preferred infusion pressure, it works systematically by:

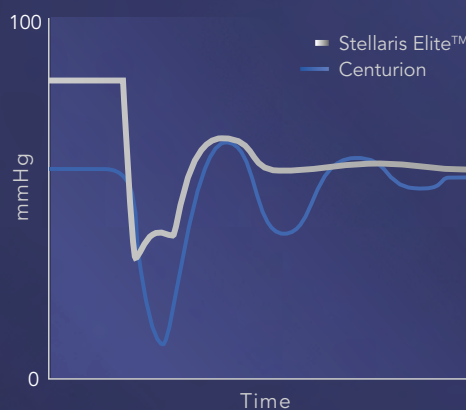
- **Monitoring:** Adaptive Fluidics™ continuously tracks vacuum flow rate
- **Compensating:** The system automatically adjusts infusion pressure, to maintain anterior chamber stability

STELLARIS ELITE™ VS. INFINITI



Stellaris Elite™ with Adaptive Fluidics™ minimizes post-occlusion surge delivering a lower variation in pressure than Infiniti.<sup>1</sup>

STELLARIS ELITE™ VS. CENTURION



Stellaris Elite™ with Adaptive Fluidics™ delivers an effective post-occlusion chamber pressure that's three times higher than Centurion with Active Infusion, resulting in reduced post-occlusion surge.<sup>2</sup>

Vacuum = 400 mmHg    Flow = 420 c/min    Infusion Pressure = 60 mmHg

1. Data on file.  
2. Data on file.



# #Welco

## RETHINK ADVANCED PERFORMANCE

**Attune® energy** management works synergistically with the chamber stability and vacuum efficiency of Adaptive Fluidics™ to deliver low power, emulsification with a six crystal 28.5 kHz handpiece frequency.

- Design balances mechanical cutting with acoustic cavitation
- Full 150 micron stroke length, longitudinal cutting action



# Welcome

# VITRECTOMY, VERSATILE CUTTING OPTIONS

With a variety of cutting options, Stellaris Elite™ adapts to a wide range of procedural needs.

## SINGLE-PORT VITRECTOMY CUTTER

- Available in 20, 23, and 25 gauge
- New 7,500 cpm cut rate, for efficient vitreous removal
- Cuts only in the forward position



CUT 1



NO CUT



## BI-BLADE™ VITRECTOMY CUTTER

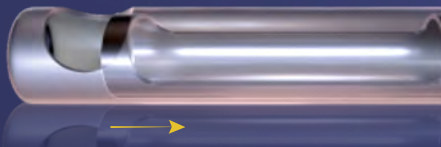
- 25 and 27ga with cut rate up to 15,000 cpm
- Dual-port design, for consistent flow rate and reduced retinal traction
- Cuts in both forward and backward positions, for two cuts per cycle



CUT 1



CUT 2



# Liquetaction

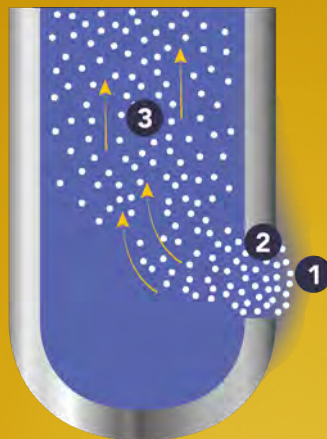
## VITESSE™ HYPERSONIC VITRECTOMY

Exclusive to Stellaris Elite™, the Vitesse™ hypersonic vitrectomy system represents a new approach to vitreous removal (patented technology).

- **Optimized Control and Precision:** HyperV technology creates a localized tissue liquefaction zone, at the edge of the port
- **Consistent Flow:** OpenPort design is 100% open, 100% of the time
- **Unobstructed Aspiration:** Novel single-lumen design



### HOW IT WORKS

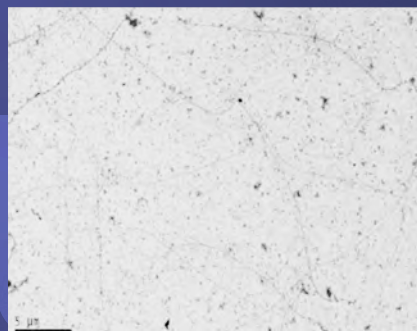


- 1 HyperV technology creates a tissue liquefaction zone at edge of the port
- 2 Vitreous is aspirated through the open port
- 3 Liquefied vitreous is aspirated through the unobstructed lumen

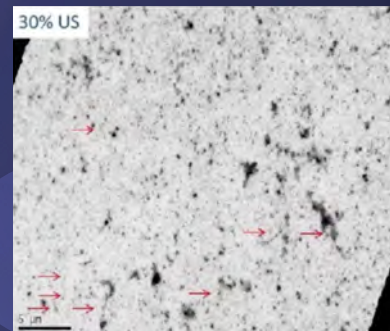
### ELECTRON MICROSCOPY FINDINGS IN HUMAN VITREOUS\*

In cadaver eye experimental study, Hypersonic liquefaction results in more fragmentation of the vitreous collagen fibers.

#### PNEUMATIC CUTTERS



#### VITESSE HYPERSONIC LIQUEFACTION



\*Pastor-Idoate S, Bonshek R, Irion L, *et al.* Ultrastructural and histopathologic findings after pars plana vitrectomy with a new hypersonic vitrector system. Qualitative preliminary assessment. *Vavvas DG, ed. PLoS ONE.* 2017;12(4):e0173883. doi:10.1371/journal.pone.0173883.

## COMPREHENSIVE VISUALIZATION TECHNOLOGIES

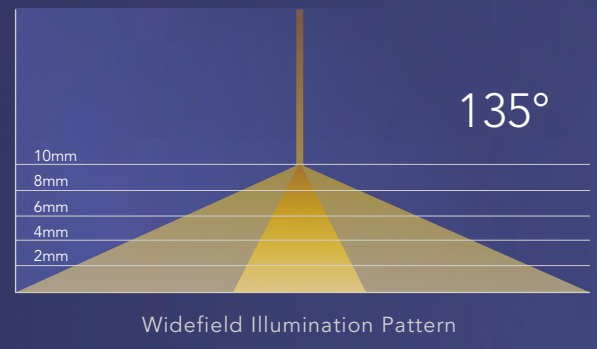
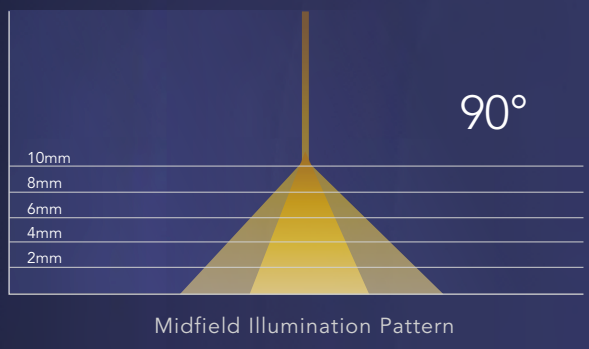


Stellaris Elite™ offers a dedicated combination of light source, fiber optics, and light filtering technologies. Collectively, they enable optimized visualization, differentiated viewing options, and surgical control.

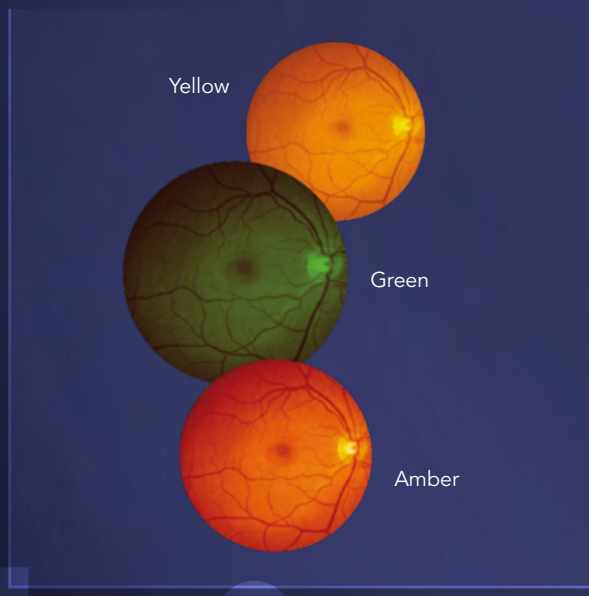
### OPTIMIZED ILLUMINATION

- Bright Xenon light is specifically designed for small-gauge vitrectomy
- Supports fiber optic add-ons as small as 29ga
- Numerous specialized illumination options including chandeliers, illuminated instruments, and illuminated laser probes

### FEATURES PACKS WITH BOTH MIDFIELD AND DIFFUSE WIDE FIELD LIGHT PATTERNS



### DIFFERENTIATED VIEWING



- Proprietary color filters
  - Yellow
  - Green
  - Amber
- Filters may be used as an augmentation or an alternative to intraoperative dyes

# Re



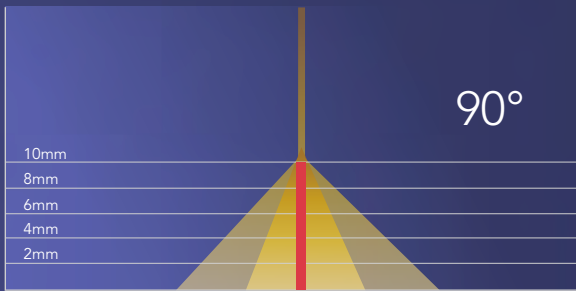
# Next Generation

## EXPANDED ACCESS

- A comprehensive portfolio of high-quality laser probes
- Available in 20, 23, 25 and 27ga
- Patented directional laser probes feature a fixed fiber together with a moving shaft, for 90-degree curve actuation
- Illuminated directional laser probe delivers midfield light patterns and enables unassisted scleral depressions



## LASER PROBE ILLUMINATION PATTERN



Midfield Illumination Pattern

Available in Directional, Straight, and Curved Format



# Ready For

# EASE-OF-USE

## WIRELESS DUAL LINEAR FOOT PEDAL

Rapid response and control in changing conditions.

- Enables management of both pitch and yaw planes
- Integrated movements provide simultaneous control of irrigation, ultrasound, and aspiration
- **Irrigation on-off is now available on the yaw planes**



## 3 MINUTE SET-UP

Single touch automated Prime and Tune for an easy and quick setup.

**Want to make more of your valuable time and resources?**

**Stellaris Elite™ can help.**

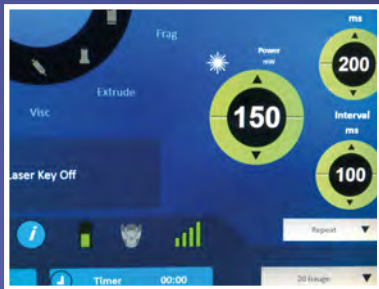
Stellaris Elite™ is designed for both Cataract and Vitreoretinal surgical practice.

### **OR-Optimized for you and your staff**

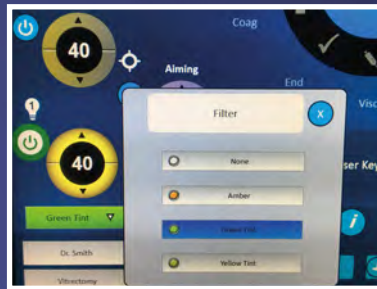
- Small OR footprint
- Wireless foot pedal
- Easy to set-up, priming and tuning of tubing and handpieces
- Preassembled, ready-to-use cassette/tubing **with a new configuration**
- Designed to decrease turnaround time
- Wide range of accessories, handpieces and Storz and Synergetics® Ophthalmic Instruments
- Stellaris Elite™ is expandable to perform vitreoretinal procedures too

## ENHANCED GRAPHIC USER INTERFACE FOR IMPROVED EASE-OF-USE

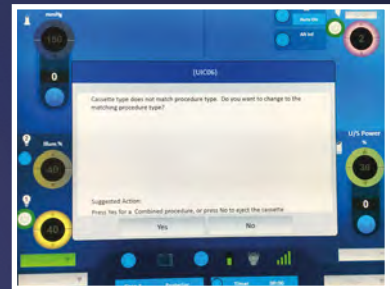
### INTEGRATED LASER CONTROL



### DROP-DOWN, COLOUR CODED MENU FOR LIGHT FILTER SETTINGS



### ONE STEP ERROR RESOLUTION



### Clarity for surgeons

- Integrated laser controls
- Status, settings displayed on home screen
- Drop-down menus for each phase
- Colour coded drop down menus for light filter settings
- Voice confirmation on added phases
- Password protected surgeons settings

### Intuitive for OR staff

- Easy learning curve
- Simplified layout with larger buttons and improved readability (contrast, colour and icon size)
- One button tuning and priming
- One combined screen for all procedural needs
- Intuitive with 'show me the steps' tutorial animation
- 'One Step' error resolution

# Ease

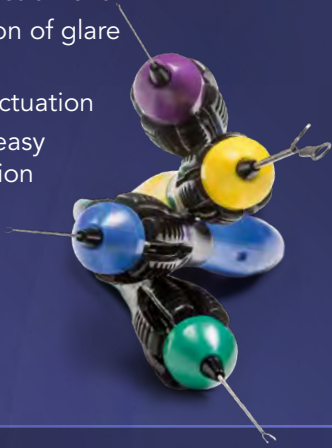
# seo of us

# BAUSCH + LOMB PREMIUM RETINA PLATFORM

## INSTRUMENTATION AND ACCESSORIES

### Pinnacle 360™ Instrumentation

- Full line of single use instrumentation
- Comfort and quality in a disposable instrument
- Extensive selection of glare free tips
- Ergonomic 360 actuation
- Color coded for easy gauge identification
- Myopic forceps (37 mm)



### Laser Probes

- Curved, directional, and illuminated
- Patented directional technology aids instrument transfer and allows for a curve up to 90°
- Illuminated versions provide up to 62 lumens of light
- 20, 23, 25 and 27ga
- Directly connect to most retina lasers (adaptor is required for illumination)



### Diamond Dusted Membrane Scraper (DDMS)

- Diamond dusted silicone design allows the instrument to brush the surface of the retina and elevate the membrane
- Retractable version to facilitate transfer through valved trocar/cannula systems
- Retractable and 27ga versions are unique to Bausch + Lomb
- 20, 23, 25 and 27ga



### Chandelier

- Trocar with magnet/cannula is provided
- Variable depth design allows the surgeon to control the illumination pattern
- Available from 23ga to 29ga
- Adapts to most retina light sources (adaptor is required)



### Cannulas

- Backflush can be used actively or passively
- Soft-tip cannula available in 23, 25 and 27ga
- Used with any vitrectomy platform
- Subretinal cannula available in 25ga with 41ga tip
- VFY cannula available in 23 and 25ga
- Silicone aspiration kit available in 23, 25 and 27ga



## VITREORETINAL TAMPONADES

### **Oxane<sup>®</sup>, Oxane<sup>®</sup> HD, DK-line<sup>®</sup>, Okta-line<sup>™</sup> tamponades**

Trusted high quality VR intraoperative and mid to long-term tamponades

#### **Oxane<sup>®</sup>**

- Prefilled syringe of Silicone Oil tamponade
- High interfacial tension
- For mid and long term tamponade

#### **Oxane<sup>®</sup> HD**

- Mixture of silicone oil and RMN3
- Heavier than water tamponade indicated in severe inferior and posterior breaks
- Potentially less risk of passage of silicone oil in the anterior chamber in phakic and pseudophakic eyes
- Medium range viscosity for easy automatic injection

#### **DK-line<sup>®</sup>, Okta-line<sup>™</sup>**

- Purified PFCL for intraoperative use only in a range of VR surgery indications
- Adequate refractive Index for use perfect visibility of the bubble



## STERILE SINGLE USE VITREORETINAL TRAYS

- Perform vitreoretinal surgeries with the Storz<sup>®</sup> Ophthalmic Instruments retinal line of 20, 23, 25 and 27 gauge instruments
- With forceps, bipolar erasers, picks and backflush handpieces, you will be able to assemble all essentials for your next retinal surgery in one tray

Visit [www.storzeye.eu](http://www.storzeye.eu) to assemble your individual Tray at home or on your mobile device.



# SUPPORT & FACTORIES

## COMPREHENSIVE SUPPORT FOR MAXIMUM PERFORMANCE

We provide extensive support service to ensure maximum performance of our products - our global teams of experts are only ever a phone call away.

### Sales Personnel

Receive extensive product training so they can provide the highest level of support to you and your hospital staff.

### Customer Services

Representatives are available 8 hours a day to answer all queries relating to orders, pricing, product availability, returns, deliveries and credit notes.

### Global Logistics Capabilities

Our global network of service representatives and distributors ensure orders are dispatched around the clock, most within 24-48 hours.

### Technical Service

Certified engineers receive hands-on product training, rigorous certification, tests and continuous training updates.

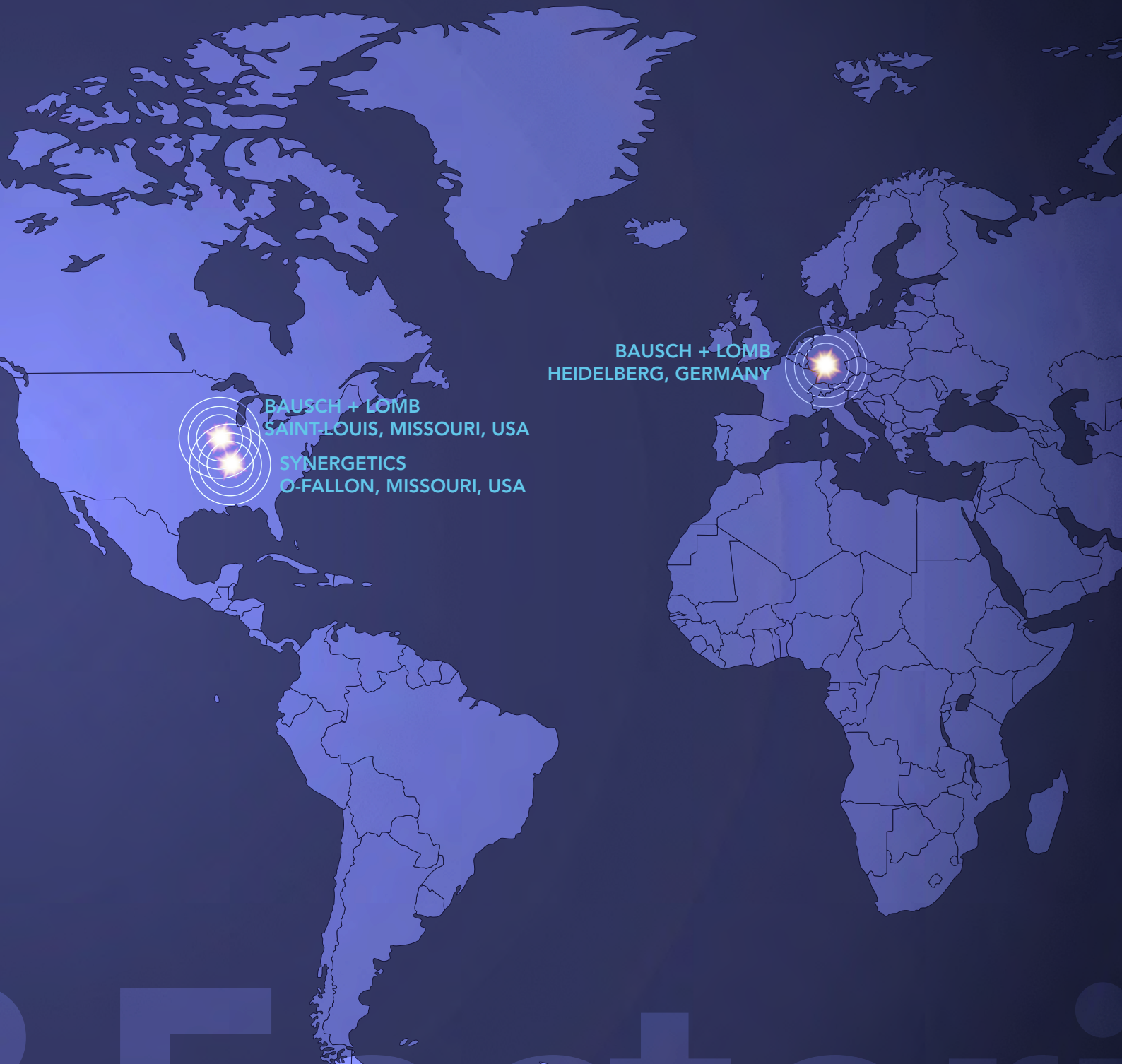
Predictive system management and maintenance: remote monitoring to prevent problems before they arise, enable software updates and back-up system data, with field engineers dispatched as needed.

Routine maintenance and inspections: prevent service, interruptions to keep equipment operating at peak efficiency.

Installation management: site assessment, installation review and process and equipment coordination – enable you to start generating revenue right away.





# Support &




BAUSCH + LOMB  
SAINT-LOUIS, MISSOURI, USA  
SYNERGETICS  
O-FALLON, MISSOURI, USA

BAUSCH + LOMB  
HEIDELBERG, GERMANY

 [www.bauschsurgical.eu](http://www.bauschsurgical.eu)

 @BauschSurgical

 Bausch + Lomb Surgical

Please contact your Bausch + Lomb representative  
for more information on Stellaris Elite™ platform.



**BAUSCH + LOMB**

®/™ are Trademarks of Bausch & Lomb Incorporated or its affiliates. All other product/brand names are trademarks of their respective owners. © 2017 Bausch & Lomb Incorporated.